

MODULE I
ELECTRICAL INSTALLATION TECHNOLOGY
ENG/OS/EI/CR/02/3/MB
INSTALL TRUNKING SYSTEM
SEPTEMBER-NOVEMBER 2025



**TVET CURRICULUM DEVELOPMENT, ASSESSMENT AND CERTIFICATION
COUNCIL (TVET CDACC)**

PRACTICAL ASSESSMENT

INSTRUCTIONS TO THE CANDIDATE:

1. This unit of competence shall be assessed in two phases.
2. Each assessment session has the duration included in brackets
3. The second phase of the assessment shall include a practical session and an oral assessment session.
4. The assessor will take photos and videos as you perform the tasks at critical points during the assessment.
5. Ensure all required resources for the assessment have been provided before beginning the assessment.

PRACTICAL ASSESSMENT 1 (3 HOURS)

Element covered

1. Identify trunking Accessories
2. Prepare Trunking work pieces
3. Mount Trunking work pieces

TASK

Using **Figure 1**:

- i. Identify the following types of trunking
 - PVC
 - Metal/steel
 - Galvanized iron
- ii. Identify the following sizes of trunking
 - 16mm x 16mm
 - 25mm x 16mm
 - 25mm x 25mm
 - 40mm x 25mm
- iii. Prepare PVC mini trunking work piece.
- iv. Install PVC mini trunking and accessories.

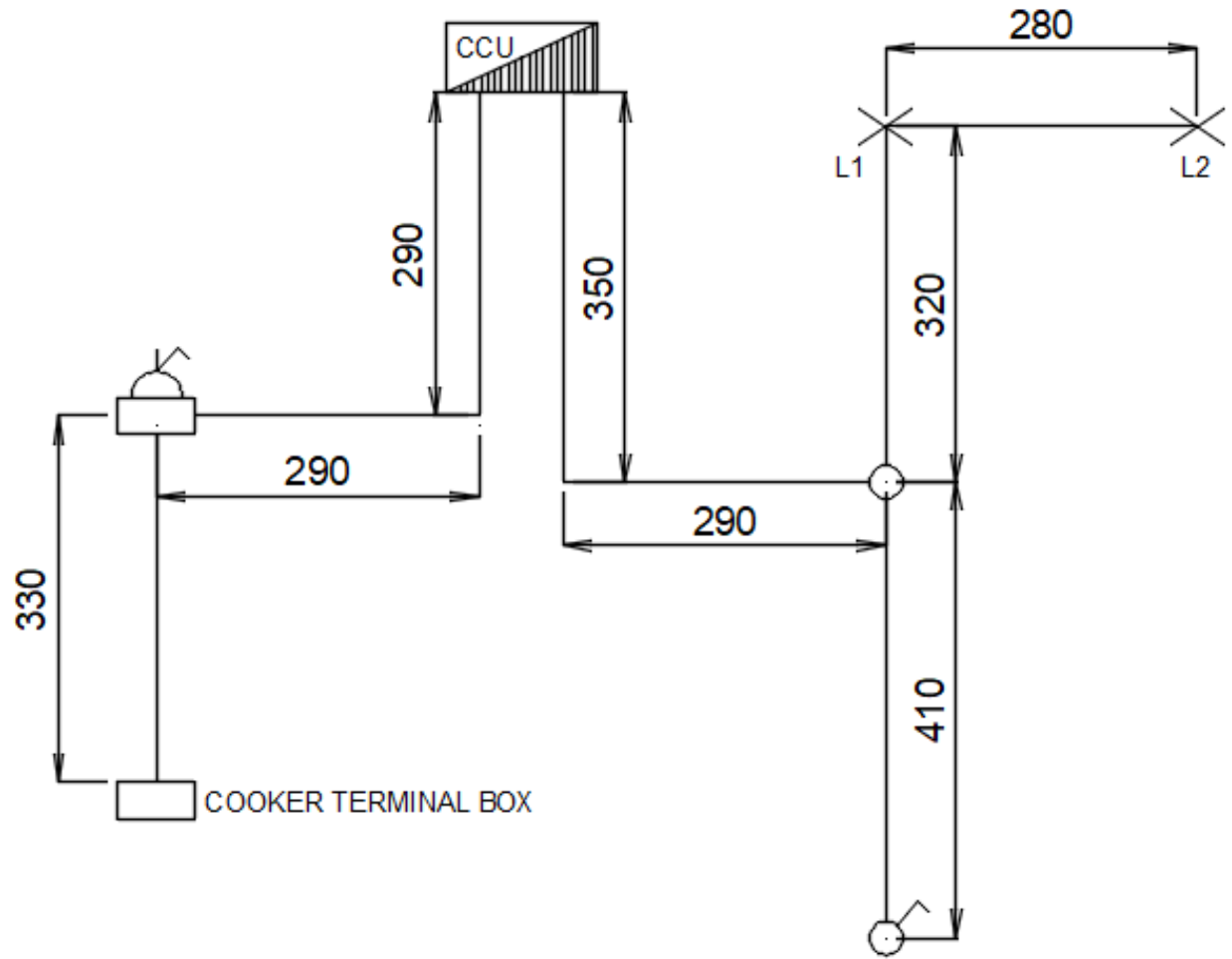


Figure 1

PRACTICAL ASSESSMENT 2 (4 HOURS) AND ORAL ASSESSMENT (1 HOUR)

Element covered

1. Mount trunking work pieces
2. Install of electrical cables and accessories
3. Perform tests and inspection

TASK

Figure 2 shows the layout of a domestic electrical installation with two final circuits.

- i. Draw a wiring diagram such that:
 - Lamps L1 and L2 are controlled separately by the switch.
 - Socket outlets are wired in ring.
- ii. Using PVC mini trunking system, install the circuit.
- iii. Perform circuit inspection.
- iv. Perform the following tests:
 - Continuity
 - Polarity

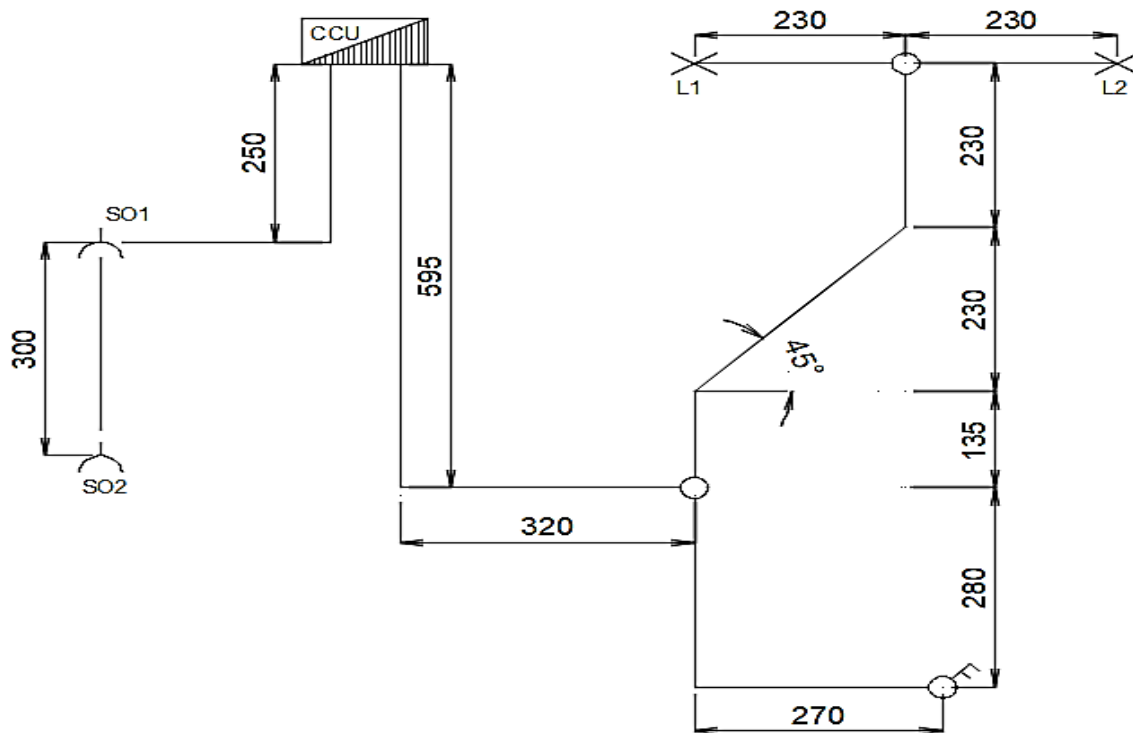


Figure 2

The assessor will proceed to ask the oral questions for one hour.